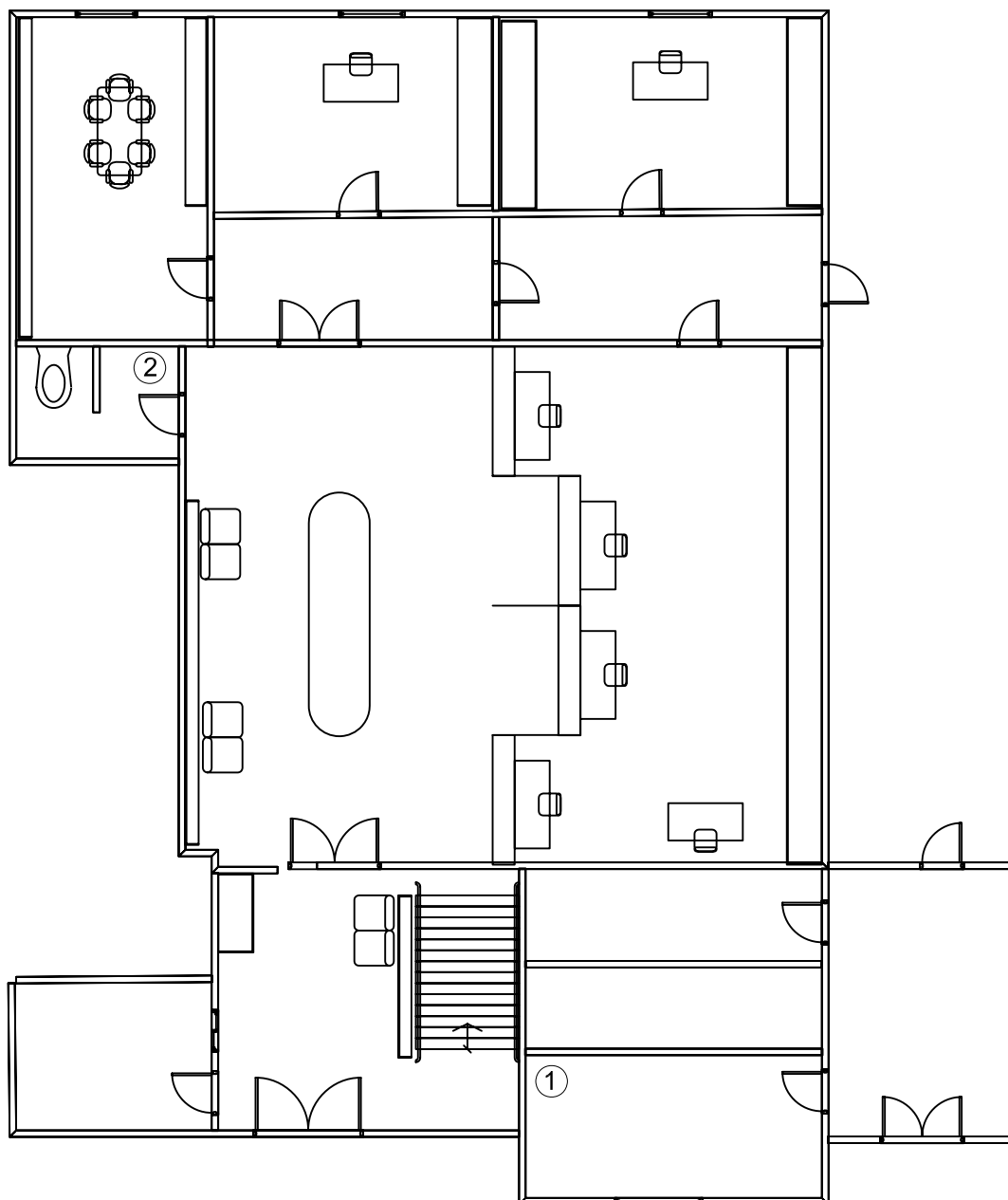


Ground Floor		
	pcs.	Power (W)
T5 2x28W/840	0	0
18W/825 E27	1	18
35W/830 G12	1	35



No.	Floor	Room type	Area (m2)	Luminarie Type	Number of lamps	Power (W)	Total power (W)	Luminous flux (lm)	Total Luminous flux (lm)	Maintained illuminance (lx)	Standard illuminance (lx)	Light color	Min Total Luminous Flux (lm)
1	Ground Floor	Ports	5,09	35W/830 G12	1	35	35	3600	3600	707	500	830	2545
2	Ground Floor	Toilet	3,00	18W/825 E27	1	18	18	1160	1160	387	200	825	600

DELTER

Support to Meet Requirements of the Energy Community Treaty for SEE Focusing on Energy Efficiency and Renewables

PROJECT:	Municipality of Trebinje administration building
CADCODE:	TRB-PLOTDRW-01
SCALE:	
DATE:	10.10.2011